

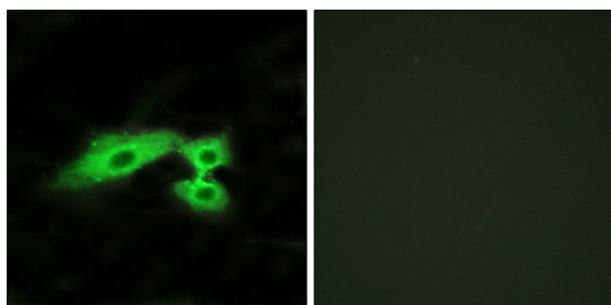


# Mas1-like Polyclonal Antibody

<b>Catalog No</b>	YP-Ab-13402
<b>Isotype</b>	IgG
<b>Reactivity</b>	Human;Rat;Mouse;
<b>Applications</b>	IF;ELISA
<b>Gene Name</b>	MAS1L
<b>Protein Name</b>	Mas-related G-protein coupled receptor MRG
<b>Immunogen</b>	The antiserum was produced against synthesized peptide derived from human MAS1L. AA range:31-80
<b>Specificity</b>	Mas1-like Polyclonal Antibody detects endogenous levels of Mas1-like protein.
<b>Formulation</b>	Liquid in PBS containing 50% glycerol, 0.5% BSA and 0.02% sodium azide.
<b>Source</b>	Polyclonal, Rabbit,IgG
<b>Purification</b>	The antibody was affinity-purified from rabbit antiserum by affinity-chromatography using epitope-specific immunogen.
<b>Dilution</b>	Immunofluorescence: 1/200 - 1/1000. ELISA: 1/5000. Not yet tested in other applications.
<b>Concentration</b>	1 mg/ml
<b>Purity</b>	≥90%
<b>Storage Stability</b>	-20°C/1 year
<b>Synonyms</b>	MAS1L; MRG; Mas-related G-protein coupled receptor MRG; MAS-R; MAS1-like
<b>Observed Band</b>	
<b>Cell Pathway</b>	Cell membrane; Multi-pass membrane protein.
<b>Tissue Specificity</b>	G-protein coupled receptors,PCR rescued clones,
<b>Function</b>	similarity:Belongs to the G-protein coupled receptor 1 family.,similarity:Belongs to the G-protein coupled receptor 1 family. Mas subfamily.,
<b>Background</b>	similarity:Belongs to the G-protein coupled receptor 1 family.,similarity:Belongs to the G-protein coupled receptor 1 family. Mas subfamily.,
<b>matters needing attention</b>	Avoid repeated freezing and thawing!
<b>Usage suggestions</b>	This product can be used in immunological reaction related experiments. For more information, please consult technical personnel.



## Products Images



Immunofluorescence analysis of HeLa cells, using MAS1L Antibody. The picture on the right is blocked with the synthesized peptide.